

## Intuicom Radios – Direct Connect to ASC2M Master

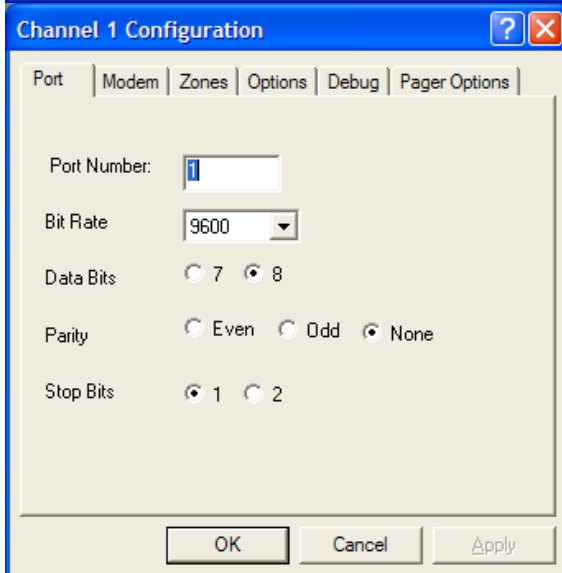
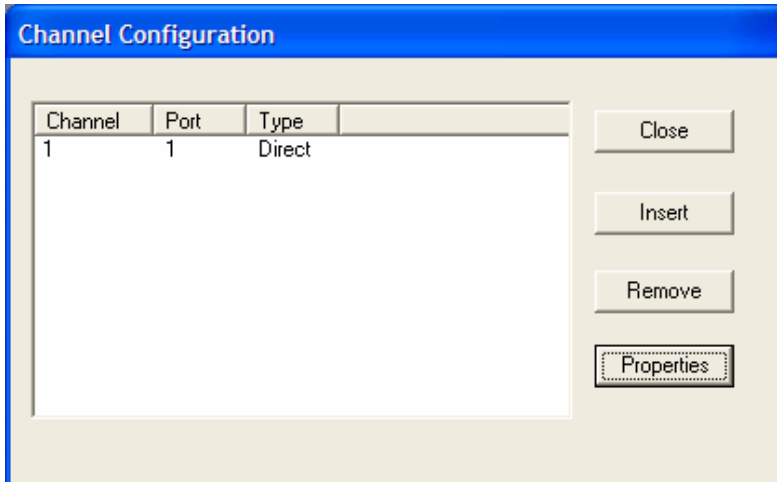
### ASC2M-1000 CONFIGURATION:

MM 1-0-6 => COMM TYPE = **DIRECT**  
CONNECTS VIA PORT = **PORT 2**

PORT 2 :    PROTOCOL (CHECK S1) = **ZONE MON**  
          SPEED                   = **9600**  
          DATA FORMAT           = **8,N,1**

**\*\* CHECK S1 \*\*** S1 (NULL MODEM) depends on the cabling used. For this example place **S1** in the **MODEM** position.

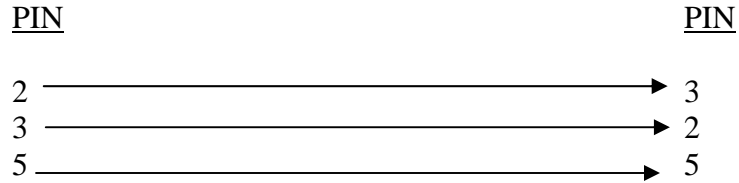
### ARIES CONFIGURATION:



**CENTRAL COMPUTER to RADIO:**

ARIES Computer  
Port "1" (9 Pin Female)

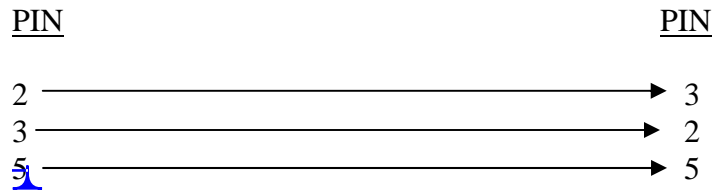
Intuicom Communicator II  
Main Port (9 Pin Male)



**ASC2M MASTER to RADIO:**

ASC/2M-1000 Master  
Port 2 (25 Pin Male)

Communicator II  
Main Port (9 Pin Female)



\*You can use the cable supplied with the radio by using a 9 to 25 pin adapter at the Master.